

# LOGISTICS & DISTRIBUTION

INDUSTRY SNAPSHOT | PASCO COUNTY, FL



PASCO EDC  
NORTH TAMPA BAY, FLORIDA

Pasco County, the gateway to southwest Florida, is strategically located within 30 minutes of major regional transportation assets including **Tampa International Airport** and **Port Tampa Bay**.

Florida is known for being a consumer state, and additionally, companies can benefit from low back-haul rates out of Florida by utilizing major modern interstates including **I-75 & I-4**.

**CSX Rail**, the largest rail provider, offers over 3,000 miles of track in Florida alone. With a top **Foreign Trade Zone** designation, Pasco County has your all-access pass to the Southeast United States and Latin American markets.

## WHO WE ARE

The Pasco Economic Development Council (Pasco EDC) is a private, non-profit organization that promotes growth and prosperity through the development of a sustainable and diversified economy.

Our county-wide economic development efforts are funded by corporate and public investors, and represent a strong partnership which is focused on economic vitality and making Pasco County a great place to live and work.

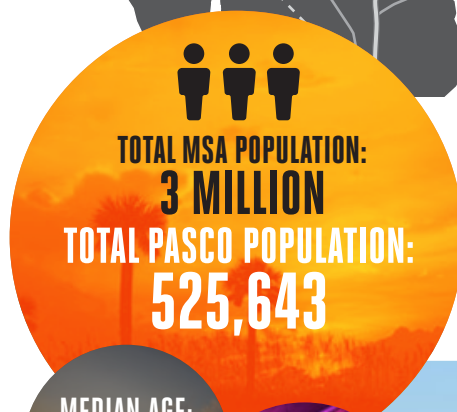
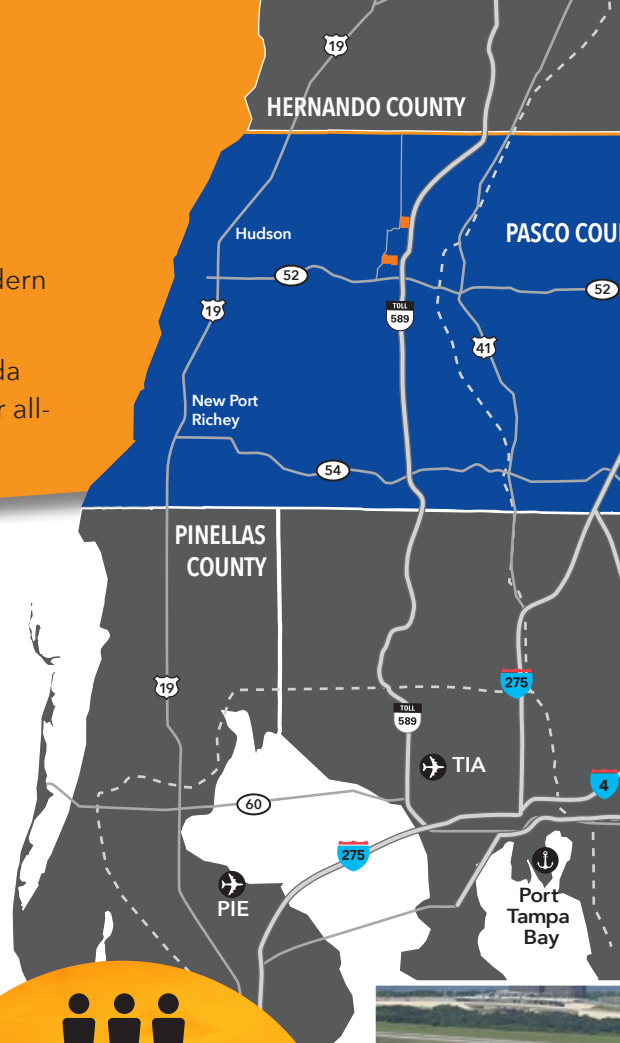
## PASCO'S COMPETITIVE ADVANTAGE

- **TALENT** – K-12 and post-secondary curriculums provide a talent pipeline focused on Distribution & Warehouse industry training
- **SYNERGY** – Regional assets and partnerships with the most innovative leaders in the industry
- **BUSINESS CLIMATE** – Stable, pro-business government leadership in a right to work state with local incentives
- **TAXES** – Low operating costs and no personal income tax
- **COMMUNITY** – A quality of life that attracts and retains top talent
- **TRANSPORTATION** – Five major regional commuter arteries intersect Pasco County: I 75, FL 589, US 41, US 19 & US 301

## INFRASTRUCTURE

Pasco County has the business infrastructure for companies to succeed:

- Three electric providers: Duke Energy, TECO/Emera, Withlacoochee River Electric Cooperative
- Three telecommunications providers
- Two natural gas providers: TECO Gas and Clearwater Gas System
- New investment in public water and sewer utilities
- Building upon the transportation network to increase mobility
- Pasco Ready Sites: Over 1,800 acres evaluated and ready for industrial development



**SEA**  
Port Tampa Bay is the largest port in Florida

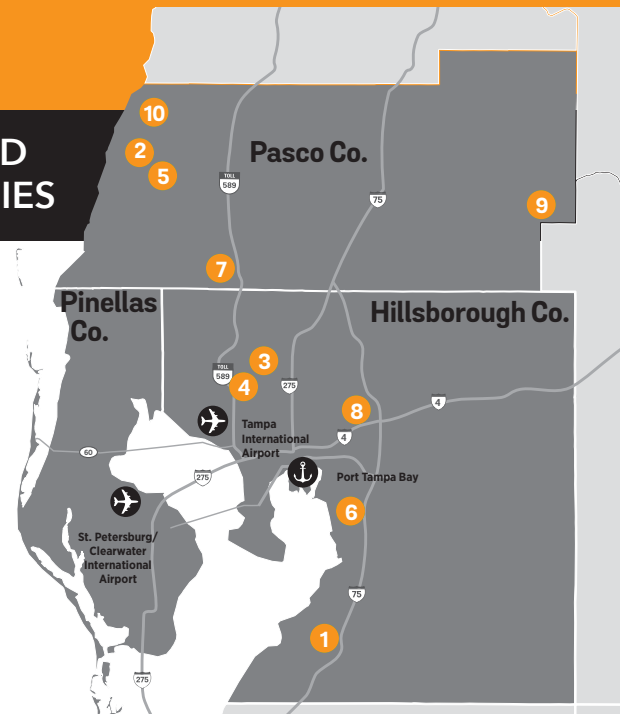
→ **Less than 45 minutes to Port Tampa Bay and Tampa International Airport.**



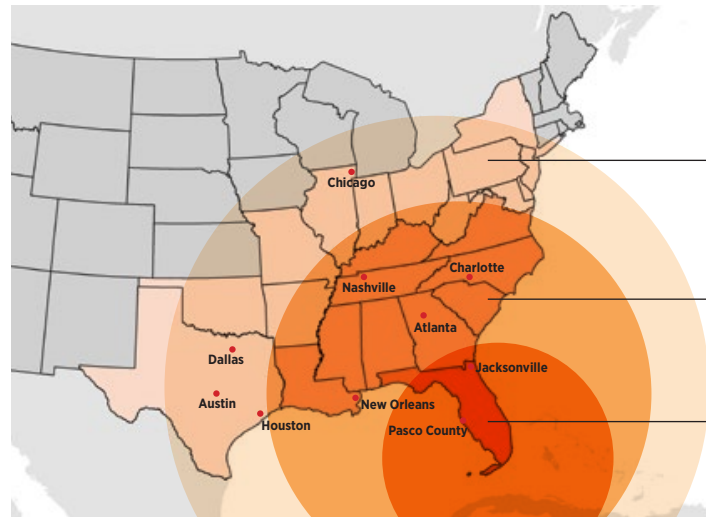
Last year Florida businesses exported **\$57+ billion** to more than 190 countries (Wisertrade)

## NOTABLE LOGISTICS AND DISTRIBUTION COMPANIES

1. Amazon
2. Baker Distributing
3. Gordon Food Services
4. Hydorlic Distribution Co.
5. Jameson Logistics
6. JB Hunt Transport Corp
7. Lowes
8. Mac Papers
9. Nestle Waters
10. Town & Country Industries



**AIR**  
Tampa International  
is the best airport  
for exporting to Latin  
America



**3 DAYS TRUCK DRIVE**  
POPULATION: 200 Million

**2 DAYS TRUCK DRIVE**  
POPULATION: 73.6 Million

**1 DAY TRUCK DRIVE**  
POPULATION: 18.8 Million

→ Companies can reach one-third of the US population within twelve hours.

**LAND**  
CSX Rail serves Pasco County, with  
over 3,000 miles of rail in Florida



## AVERAGE ANNUAL WAGES

Title	Pasco Entry	Pasco Experienced	MSA Average	USA Average	Average Annual Growth
Supply Chain Manager	\$47,400	\$115,700	\$101,600	\$113,200	1.60%
Logisticians	\$41,100	\$79,600	\$73,100	\$78,700	1.60%
Transportation, Sotorage and Distribution Managers	\$55,600	\$108,700	\$99,500	\$100,700	1.50%
CDL Driver	\$23,300	\$45,100	\$41,300	\$44,500	1.50%
Accountants	\$40,000	\$75,700	\$69,900	\$77,900	1.80%
Software Developer, Systems	\$49,600	\$105,300	\$95,200	\$111,800	1.80%





## PASCO COUNTY INCENTIVES

### JOB CREATION INCENTIVE PROGRAM

In addition to the State of Florida Incentive Programs, Pasco offers inducements for job creators. The following characteristics apply:

- **\$2,000-\$5,000 per job**
- **Minimum 10 new jobs created** in Pasco County during the first year of operations
- **Average annual wage of least 115%** of \$37,315 (Pasco County Average Annual Wage per the Florida Department of Economic Opportunity)
- **At least 51% of sales** outside of Pasco County
- **Payable to the company at 25%** per year over four years

Additional incentives available



### PENNY FOR PASCO

In the year 2012, Pasco County residents approved a \$0.01 sales tax.

A portion of the revenue is earmarked for economic development programs, such as:

- Business Park Development
- Infrastructure, Permitting
- Speculative Building Construction
- Land Assembly

This Penny for Pasco is estimated to generate approximately \$56 million over 10 years for economic development projects.

## FLORIDA STATE INCENTIVES

The State of Florida has similar incentives including:

- Qualified Target Industry Tax Refund
- Tax Refund
- Capital Investment Tax Credit
- Quick Response Training
- Veterans Florida Business Training Grant
- Tax Exemptions on equipment, electricity, and steam for Targeted Industries

Pasco EDC can help companies apply for these funds.

# START MOVE GROW

Your business here.

Nestle Waters

Produced by  estudio-5