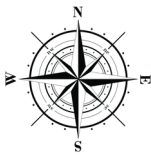
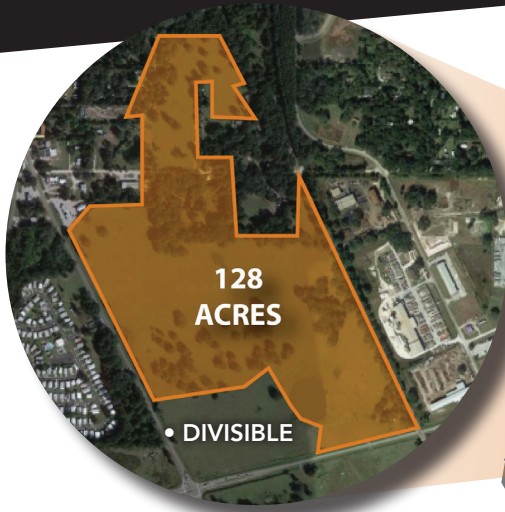


# PASCO READY SITES PROGRAM

## NORTH TAMPA BAY INDUSTRIAL PARK



### TRANSPORTATION

- ← FRONTAGE ON FL39
- ↑ 2.5 MI TO FL56
- ← 15 MI TO I-75
- ↓ 13 MI TO I-4
- ↓ 27 MI TO PORT TAMPA BAY
- ↓ 34 MI TO TAMPA INTL. AIRPORT

### 45-MINUTE DRIVE TIME

POPULATION: 1,156,636  
LABOR FORCE: 2,377,514

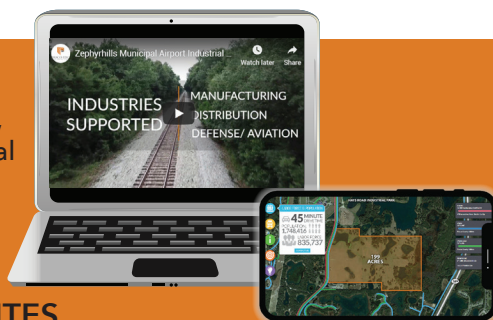
### IDEAL LAND USE

LIGHT MANUFACTURING  
LOGISTICS & DISTRIBUTION  
RAIL SERVED INDUSTRIES  
(RAIL SPUR CONCEPT- CLASS I CARRIER)

### UTILITIES

ELECTRIC 12.47kV 3-PHASE DISTRIBUTION 2.5 MW CAPACITY (0.4 MI EXT. REQUIRED TO REACH SITE 6 MONTH EST. COMPLETION)  
NATURAL GAS 4" MAIN EXTENSION TO SITE EST. COMPLETION 3 MONTHS  
WASTEWATER 4" LINE (UPGRADE POSSIBLE WITHIN 6 MONTHS)  
WATER 8" LINE 55 PSI | 12" PLANNED LINE COMPLETION BY 2021/2022

**INTERACT WITH THE SITES**  
Explore each Ready Site's utilities, transportation networks, and aerial property views using interactive maps and videos.



**ACCESS | EVALUATE | CERTIFY**  
**CALL US TODAY 888-60-PASCO**

[PASCOEDC.COM/READY-SITES](http://PASCOEDC.COM/READY-SITES)

