



ACQUISITIONS ■ INVESTMENTS ■ DEVELOPMENT ■ MASTER PLANNED PARKS



REPRESENTATIVE DEVELOPMENTS



VERIZON CENTER OF EXCELLENCE
Office | 220,000 SF
Lake Mary, Florida

TPA GROUP secured this \$30MM build-to-suit opportunity in partnership with Skanska USA. TPA worked closely with the Verizon team to design and construct this mid-rise state-of-the-art service center on a challenging deadline.



THE NORTHYARDS
Office Park | 275,000 SF
Atlanta, Georgia

TPA GROUP purchased one of two remaining historical roundhouses in the state along with several mid-century warehouses and successfully redeveloped the project into a 6-building one-of-a-kind urban office complex. The project is located just West of the Coca-Cola World Headquarters and is 96% leased.



INTERSTATE CENTRE
Industrial | 600,000 SF
Savannah, Georgia

TPA GROUP developed this institutional style cross-dock distribution facility in 2009. It is the first of several buildings to be constructed on 505 Acres owned by TPA. The building is 100% leased to two global third-party logistics companies.



REPRESENTATIVE INVESTMENTS/ACQUISITIONS



EQUITABLE

Office Tower | 600,000 SF
Atlanta, Georgia

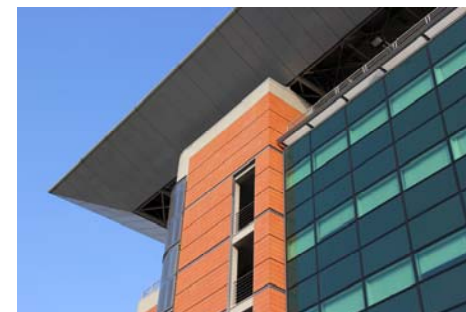
TPA GROUP purchased a controlling interest in the landmark Equitable Building in downtown Atlanta in September 2005 with a strategy of injecting new capital and leasing energy to bring the building to full occupancy. After substantial leasing progress, the building was sold to a private investor in May 2007.



ROLLING MILL HILL

Multi Family| 92 Units
Nashville, Tennessee

TPA GROUP purchased this failed 92-unit “gulch” condominium project in December 2010, made improvements necessary to complete and convert it to rental apartments, fully leased it, and sold it in December 2011.



JOHNS CREEK MEDICAL

Medical Office| 90,000 SF
Atlanta, Georgia

TPA GROUP acquired this nearly vacant Class A medical office building, which adjoins the Emory Johns Creek Hospital campus, in October 2010. The building was leased to 90% occupancy and sold to a national healthcare REIT in August 2013.

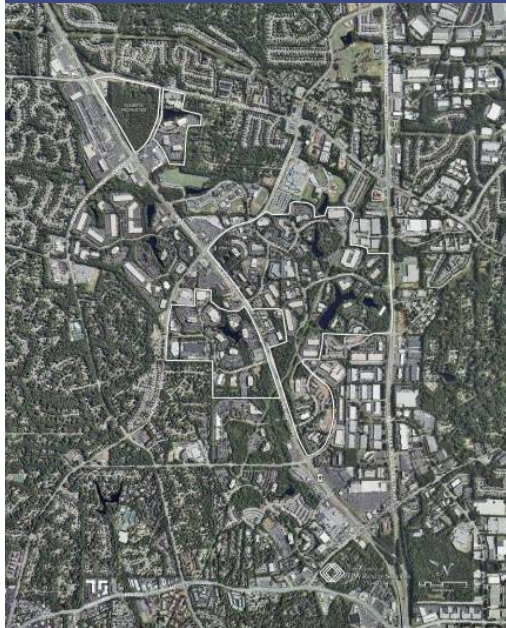


TECHNOLOGY PARK/ATLANTA

1972



2010



A 500 Acre suburban office park with over 3.4 million developed square feet.

Technology Park/Atlanta is home to over 138 major firms and 7,000+ employed, including: Checkfree/Fiserv, Reed Construction Data, United Healthcare, Intel, GE Power Systems, HCA, Primedia and Fleetcor.

Technology Park/Atlanta is now park of the new City of Peachtree Corners, which was founded in 2012.



LENOX PARK

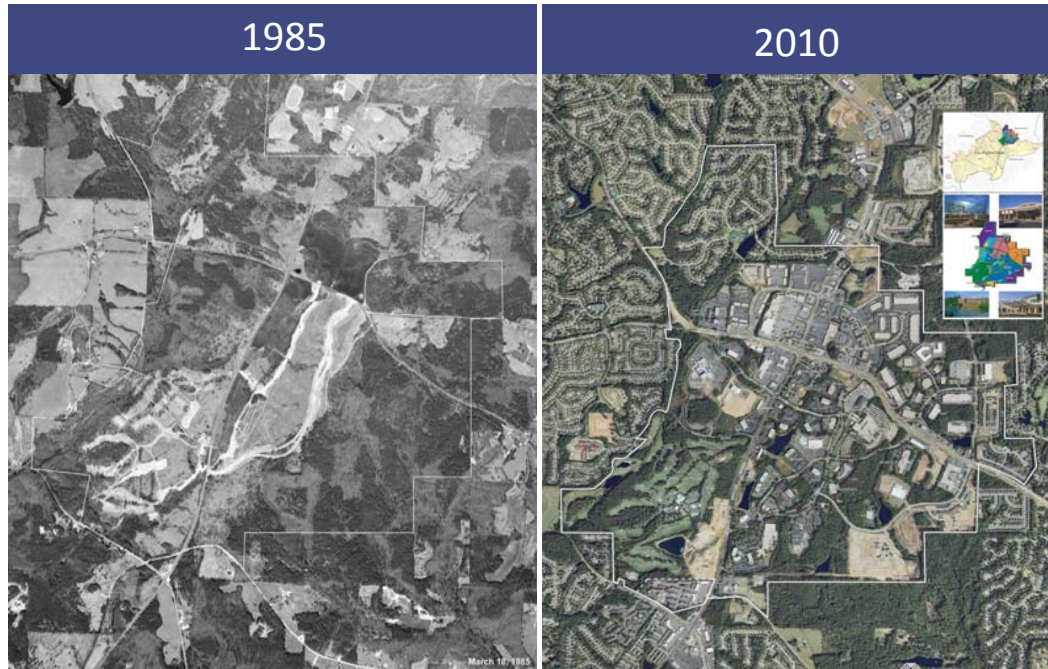


- 1.5 million sf office developed
- Single family - 162 units
- Multi family - 1,150 units
- 150 room hotel
- 25-acre park and lake





JOHNS CREEK



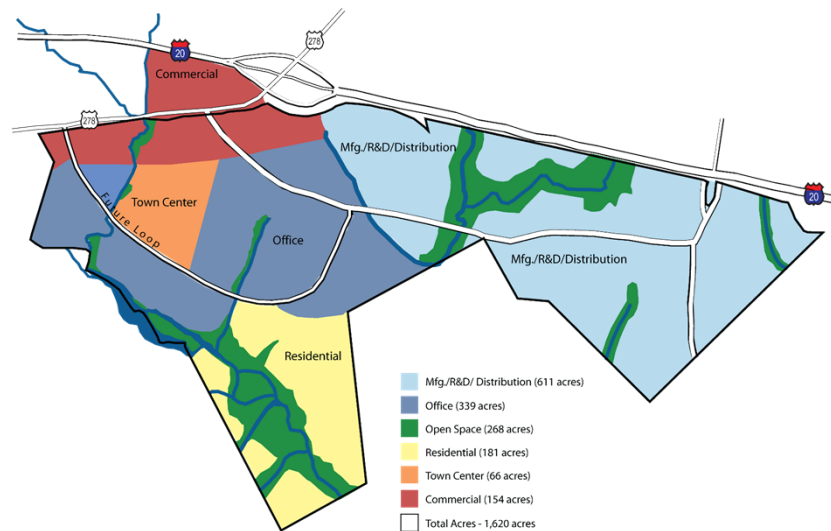
A 1,900 Ac master-planned development with more than 5.5 million square feet developed.

Home to 300+ firms and over 10,000 employed, including: Alcon/CIBA Vision, Emory Johns Creek Hospital, Johnson Controls, State Farm (regional HQ), and Kraft.

The success of the development led to the formation of the City of Johns Creek in 2006.



STANTON SPRINGS



A 1,600 Ac master planned mixed use project with over 1 million square feet already under development.

Home to Baxter Healthcare and the Georgia Bioscience Training Facility, the park will employ over 1,500 once Baxter begins operations in 2017.



NORTHPOINTE

AT SUNCOAST CROSSINGS



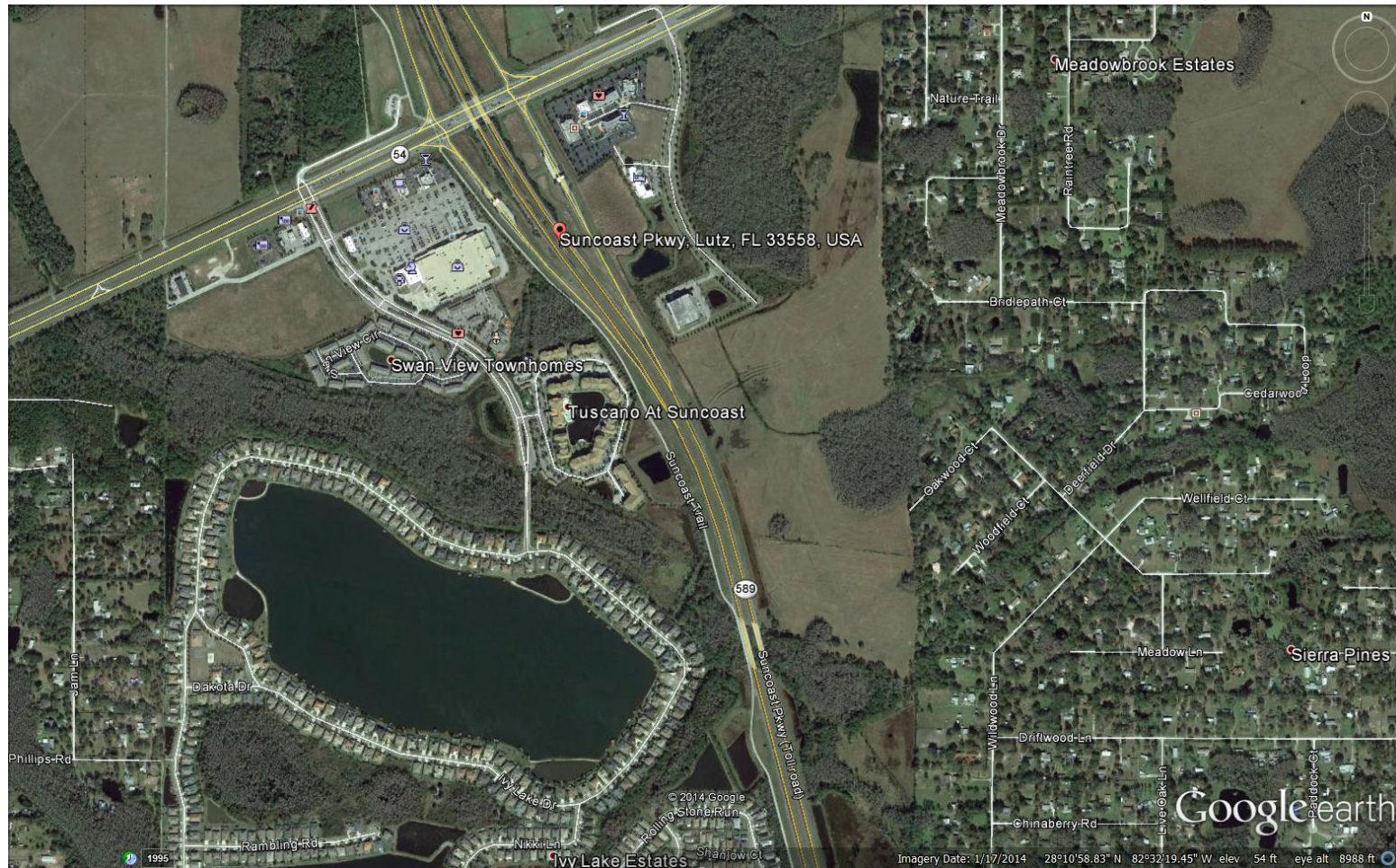
A master planned mixed-use development located at the southeast corner of Suncoast Parkway and State Road 54. 1,000,000 square feet of development rights approved and available for sale or build-to-suit.

LOCATION MAP



20 Minutes to Tampa International Airport/Westshore

30 Minutes to Downtown Tampa









- AVAILABLE SITES**
 Pad #6
 Pad #8
 Pad #9

- NYMAN BUILDING**
 ARTIX
 Pasco Economic Development Council
 Morgan Stanley
 The Hogan Group

- HUDSON BUILDING**
 Vallarta's Mexican Restaurant
 Eternity Jewelry
 International Beer Garten
 Eclipse Salon
 Kurrack Financial (Allstate)
 Clear Trust

- PASCO BUILDING**
 NorthPointe Health Care
 Bangkok Sushi
 Suncoast Dance Theatre
 Scrap & Sew

- RESTAURANTS**
 Carrabba's
 Aquafinz

- BANKS**
 Regions

- HOTELS**
 Residence Inn - Marriott





