

ADVANCED MANUFACTURING

INDUSTRY SNAPSHOT PASCO COUNTY, FL



TouchPoint
Medical

WHO WE ARE

The Pasco Economic Development Council (Pasco EDC) is a private, non-profit organization that promotes growth and prosperity through the development of a sustainable and diversified economy.

Our county-wide economic development efforts are funded by corporate and public investors, and represent a strong partnership which is focused on economic vitality and making Pasco County a great place to live and work.

PASCO'S COMPETITIVE ADVANTAGE

■ **TALENT** – Pasco County Schools serves 87,877 students everyday and was College Board's Advanced Placement District of the Year for 2020

- Pasco's A-rated schools include 40 pathways in Career and Technical Education programs through partnerships with local industry
- Access to the University of South Florida which ranks 23rd in the world among universities granted U.S. utility patents and is one of Florida's Preeminent State Research University
- Saint Leo University ranked #14 for Veterans in the South by *U.S. News and World Report*

Mettler Toledo



■ **WORKFORCE**- Our award-winning workforceCONNECTpasco.com platform allows employers to find programs that produce talent that will thrive in their industries, and explore resources that can help their business stand out to top candidates, as well as allow job seekers to discover and explore various career pathways in a diverse economy of fast-growing industries

■ **BUSINESS CLIMATE** – Stable, pro-business government leadership in a right to work state with local incentives

■ **TAXES** – Low operating costs and no personal state income tax

■ **TRANSPORTATION** – Five major regional commuter arteries intersect Pasco County: I 75, FL 589, US 41, US 19 and US 301



PASCO EDC
NORTH TAMPA BAY, FLORIDA®

TOTAL MSA POPULATION:
3.2 MILLION
TOTAL PASCO POPULATION:
592,669
TOTAL PASCO WORKFORCE:
328,932

Office of Economic &
Demographic Research

FLORIDA RANKED #1
SYSTEM FOR HIGHER EDUCATION
FOR 6TH STRAIGHT YEAR

Lightcast's 2022 Talent Attraction
Scorecard

FLORIDA RANKED #1
IN NATION FOR ATTRACTING AND DEVELOPING A SKILLED WORKFORCE!

U.S. News and World Report

PASCO COMPANIES:

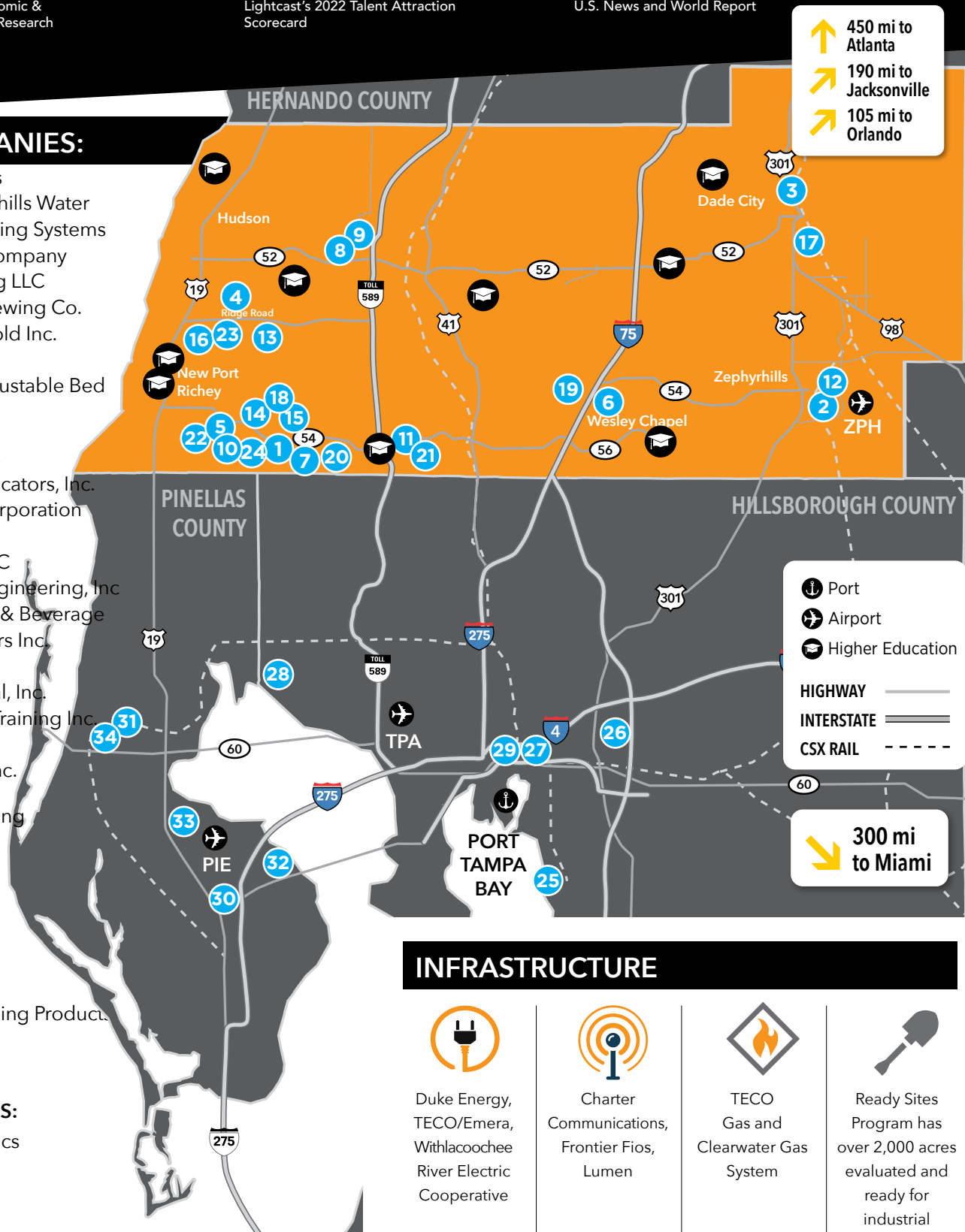
1. Bay Tech Industries
2. Blue Triton/Zephyrhills Water
3. ClarkDietrich Building Systems
4. Dixie Belle Paint Company
5. FACTS Engineering LLC
6. Florida Avenue Brewing Co.
7. Florida Custom Mold Inc.
8. Gary Plastics Corp.
9. Leggett & Platt Adjustable Bed Group
10. Meopta USA Inc.
11. Mettler Toledo LLC
12. Morrow Steel Fabricators, Inc.
13. Pall Aeropower Corporation
14. Pharmaworks, Inc.
15. Polaris Sales Co LLC
16. Seaway Plastics Engineering, Inc.
17. Southeast Bottling & Beverage
18. Stainless Fabricators Inc.
19. The Soule Co.
20. TouchPoint Medical, Inc.
21. TRU Simulation + Training Inc.
22. Welbilt Inc.
23. Widell Industries Inc.
24. Zeppelin Systems
USA-Food Processing
Plants Division

HILLSBOROUGH COMPANIES:

25. Advanced Airfoil
Components
26. Chromalloy
27. James Hardie Building Products
Inc.
28. Suzuki Marine
29. Tampa Tank

PINELLAS COMPANIES:

30. A2 Global Electronics
31. GE Energy
32. Jabil Circuit
33. Koozie Group
34. Phasetronics



INFRASTRUCTURE



Duke Energy,
TECO/Emera,
Withlacoochee
River Electric
Cooperative



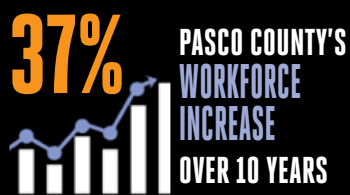
Charter
Communications,
Frontier Fios,
Lumen



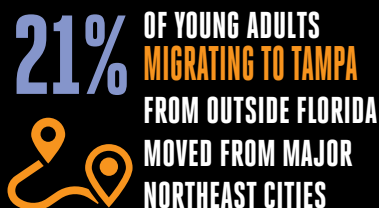
TECO
Gas and
Clearwater Gas
System



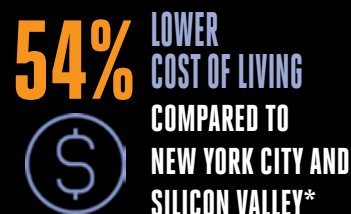
Ready Sites
Program has
over 2,000 acres
evaluated and
ready for
industrial
development



American Community Survey



Migrationpatterns.org



WORKFORCE

AVERAGE INDUSTRY WAGES: Advanced Manufacturing



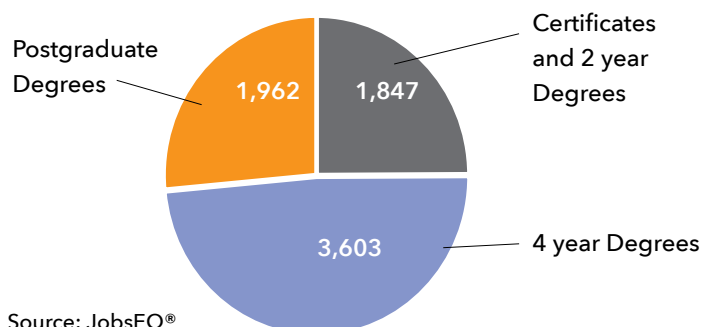
MANUFACTURING TRAINING PROGRAMS



AmSkills, a Pasco-based non-profit, seeks to educate the community about the manufacturing industry and to transform lives while strengthening communities through workforce training and apprenticeship opportunities for youth, adults, veterans, and the economically disadvantaged.

EDUCATIONAL ATTAINMENT

7,412 total degrees and certificates were earned in programs related to Advanced Manufacturing careers in the Tampa MSA during the 2020-2021 academic year.



Source: JobsEQ®

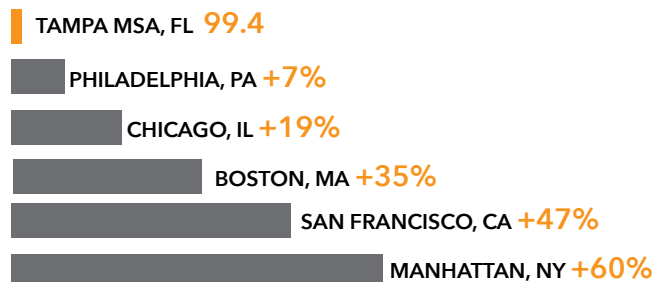
QUALITY OF PLACE

HOUSING COST INCREASE COMPARED TO TAMPA, FL*



Philadelphia, PA **+9%**
Chicago, IL **+38%**
Boston, MA **+58%**
San Francisco, CA **+70%**
Manhattan, NY **+81%**

COST OF LIVING COMPARED TO TAMPA, FL*



*Nerdwallet.com - The Cost of Living Index - COLI from the Council for Community and Economic Research

OUTDOOR RECREATION



Florida's Sports Coast/ Steven Martine

Pasco County Parks, Recreation, and Natural Resources Department works to enhance the quality of life for citizens by providing a balance of athletic, recreational, cultural and educational opportunities, and by protecting the County's natural resources including land, air, water, and wildlife.

394 Miles of Hiking and Biking Trails

24 Miles of Coastline to Explore

21K Acres of Natural Parks and Preserves

"Our manufacturing plant is truly state-of-the-art [allowing] us to significantly exceed our customer's expectations [... as well as] have great employee amenities and a collaborative environment, which we believe will attract the special talents we are looking for to fill the new positions."

– Viggo Nielsen, General Manager
METTLER TOLEDO



OVER \$56 MILLION INVESTED IN ECONOMIC DEVELOPMENT PROGRAMS IN PASCO COUNTY

This portion of the Penny for Pasco was utilized to foster diversified and sustained economic growth in:

- Entrepreneurship and small business programming
- Speculative office and industrial building development
- Business park infrastructure
- Workforce training grants
- Industrial site evaluation



Pasco County has 24 miles of coastline to explore

PASCO COUNTY INCENTIVES

Pasco County offers local incentives to induce Target Industries to locate and expand their businesses in the community. The Pasco EDC provides the applications and assistance to qualified projects when applying for the following Pasco County incentives:

- **Job Creation Incentive (JCI) Grant**
 - \$2,000-\$5,000 per job (minimum 10 new jobs)
 - Job wages at least 115% of Pasco County's average annual wage, 2023 average \$47,721, (Florida Department of Economic Opportunity)
- **Transportation Mobility Impact Fee Waiver**
- **Ad Valorem/Tangible Tax Reimbursement**

WORKFORCE TRAINING GRANTS

- Penny for Pasco Workforce Training Grant
- On the Job Training (OJT)
- Employed Worker Training (EWT)
- Incumbent Worker Training (IWT)
- Veterans Florida Business Training Grant
- Quick Response Training

PERMITTING ASSISTANCE

- Rapid Response Team
- Expedited Permitting
- Expedited Processing
- Building Permit Fee Waiver

FLORIDA STATE INCENTIVES

- 4th Best Tax Climate in the United States
- Sales & Use Tax Exemptions on Manufacturing Equipment
- Tax Exemption for R&D Equipment
- Clean Energy Incentives
- High Impact Performance Incentive
- Capital Investment Tax Credit
- Aviation Tax Exemption



PASCO EDC
NORTH TAMPA BAY, FLORIDA®

16506 Pointe Village Drive, Suite 107
Lutz, FL 33558-5255 USA
(813) 926-0827

