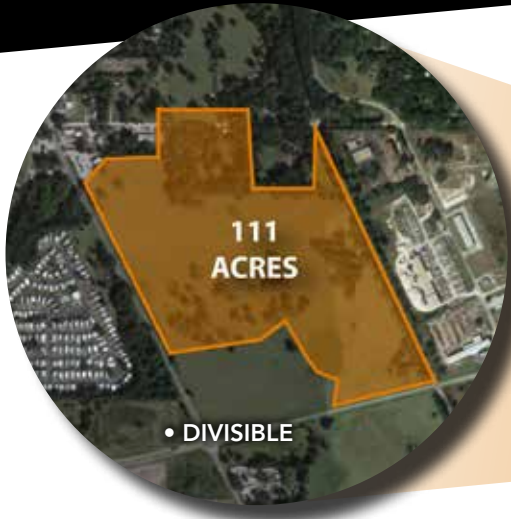


PASCO READY SITES PROGRAM

NORTH TAMPA BAY INDUSTRIAL PARK



TRANSPORTATION

- ← FRONTAGE ON FL39
- ↑ 2.5 MI TO FL56
- ← 15 MI TO I-75
- ↓ 13 MI TO I-4
- ↓ 27 MI TO PORT TAMPA BAY
- ↓ 34 MI TO TAMPA INTL. AIRPORT

45-MINUTE DRIVE TIME

POPULATION: 1,156,636
LABOR FORCE: 2,377,514

IDEAL LAND USE

LIGHT MANUFACTURING
LOGISTICS & DISTRIBUTION
RAIL SERVED INDUSTRIES
(RAIL SPUR CONCEPT- CLASS I CARRIER)

UTILITIES

ELECTRIC 12.47kV 3-PHASE DISTRIBUTION 2.5 MW CAPACITY (0.4 MI EXT. REQUIRED TO REACH SITE 6 MONTH EST. COMPLETION)
NATURAL GAS 4" MAIN EXTENSION TO SITE EST. COMPLETION 3 MONTHS
WASTEWATER 4" LINE (UPGRADE POSSIBLE WITHIN 6 MONTHS)
WATER 8" LINE 55 PSI | 12" PLANNED LINE COMPLETION BY 2021/2022

INTERACT WITH THE SITES
Explore each Ready Site's utilities, transportation networks, and aerial property views using interactive maps and videos.



ACCESS | EVALUATE | CERTIFY

PASCOEDC.COM/READY-SITES

