

PASCO COUNTY, FLORIDA, U.S.A.



Pasco Economic Development Council

- 501 (c) 3 non-profit corporation
- Public-Private Partnership
- Incorporated in 1987



PASCO EDC
NORTH TAMPA BAY, FLORIDA,



ACCREDITED
ECONOMIC
DEVELOPMENT
ORGANIZATION
International Economic Development Council



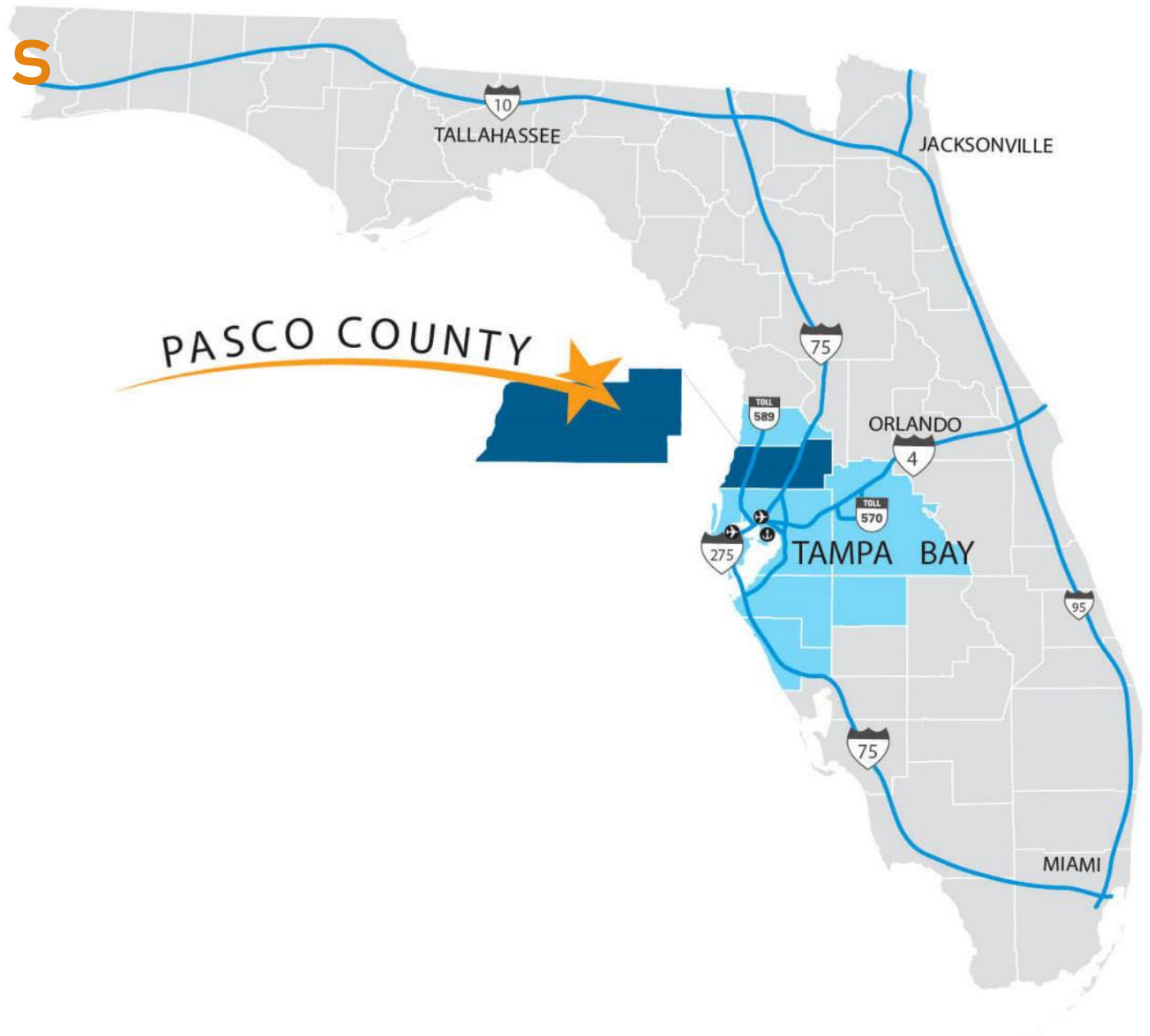
PASCO COUNTY PROFILE

TOTAL MSA POPULATION:
3.2 MILLION
TOTAL PASCO POPULATION:
592,669
TOTAL PASCO WORKFORCE:
328,932



Table of Contents

- **Pasco Profile**
 - Population & Workforce
 - Housing and Quality of Life
 - Access and Mobility
 - Tax Climate
- **Education**
 - Pasco County Schools
 - Higher Education
 - Innovation and Start-Ups
- **Target Industries**
 - Workforce
 - Existing Industry
- **Real Estate**
 - Speculative Space
 - Ready Sites Program
- **Incentives**



PASCO COUNTY PROFILE

37%



**PASCO COUNTY'S
WORKFORCE
INCREASE
OVER 10 YEARS**

**PASCO COUNTY
RANKED #3
FASTEST
GROWING COUNTY
IN THE U.S. BY NET MIGRATION**

Source: Business Facilities



PASCO COUNTY PROFILE

HOUSING



Award winning master-planned communities offering a variety of housing options.

54% LOWER COST OF LIVING COMPARED TO NEW YORK CITY AND SILICON VALLEY



\$345K Median House Price

\$1,899/mo Average Apartment Rate

EPPERSON



STARKEY RANCH



RECREATION

394 Miles of Hiking and Biking Trails

24 Miles of Coastline to Explore

21,000 Acres of Natural Parks and Preserves

AROUND THE BAY

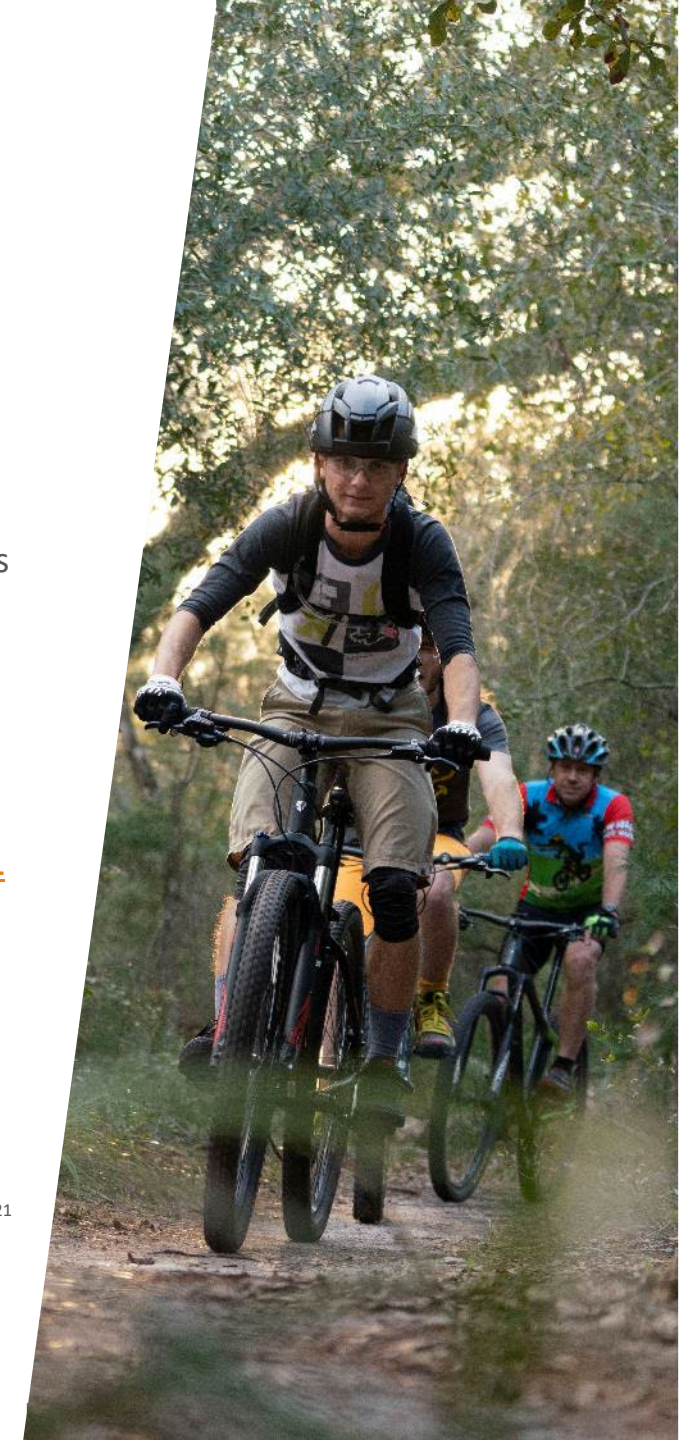
45 Minute Drive to Downtown Tampa

45 Minute Drive to Clearwater Beach **No. 1 Beach in America***

60 Minute Drive to Downtown St. Pete

60 Minute Drive to St. Pete Beach **No. 5 Beach in the World****

Source: *Tripadvisor, 2019, **Tripadvisor, 2021



ACCESS & MOBILITY

Quick access to the Tampa Bay region's assets such as Tampa International Airport, Port Tampa Bay, St. Pete International Airport, public and private universities and colleges, plenty of entertainment options including professional sports teams.

A 60-minute commute from the center of the county gives you access to a labor pool of 1,870,114 workers that possess a wide array of experience and skills.



30-Minute Average Drive Time



FLORIDA TAX CLIMATE

0%

STATE PERSONAL INCOME

5.5%

CORPORATE INCOME TAXES ARE 5.5%, LESS A \$50,000 EXEMPTION, AND S-CORPORATIONS ARE EXEMPT FROM CORPORATE INCOME TAX

4th

BEST TAX CLIMATE IN THE UNITED STATES

#1

RANKED BEST ECONOMY IN THE NATION
SOURCE: CNBC



EDUCATION SYSTEM

- **Pasco County Schools** named **Advanced Placement District of the Year*** and serves 87,877 students daily.
- Pasco's **A-rated** schools include **40 pathways** in Career and Technical Education programs through partnerships with local industry
- Saint Leo University ranked **#14 for Veterans** in the South**
- University of South Florida ranks **23rd in the world** among universities granted U.S. utility patents and is one of Florida's **Preeminent State Research Universities.**
- AmSkills, a Pasco-based nonprofit, provides support for the **manufacturing industry through workforce training and opportunities** for youth, adults, veterans, and the economically disadvantaged.

Source: * College Board 2020, **U.S. News and World Report

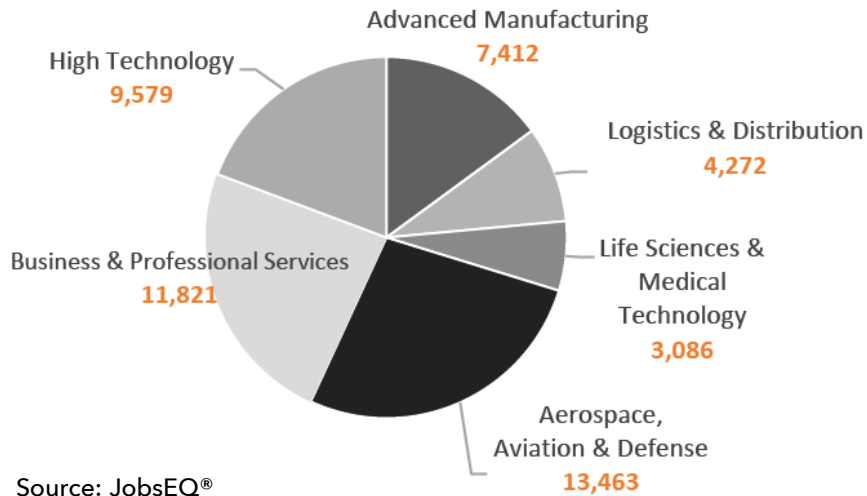


FLORIDA RANKED #1
SYSTEM FOR HIGHER EDUCATION
FOR 6TH STRAIGHT YEAR



HIGHER EDUCATION

Total awards earned for each target industry for the Tampa -St. Petersburg MSA during the 2020-2021 academic year.



Source: JobsEQ®

The Central Florida corridor is anchored by **three** Preeminent State Research Institutions in addition to 125 other colleges, universities, tech and trade schools.

552,792 Enrolled Students

59,607 4yr awards in 2019-20



UNIVERSITY OF SOUTH FLORIDA
Tampa, FL



UNIVERSITY OF CENTRAL FLORIDA
Orlando, FL



UNIVERSITY OF FLORIDA
Gainesville, FL



INNOVATION & START-UPS



SMARTSTART
A PASCO EDC PROGRAM®



USF CONNECT
The Business of Science



**INNOVATION
COLLECTIVE**



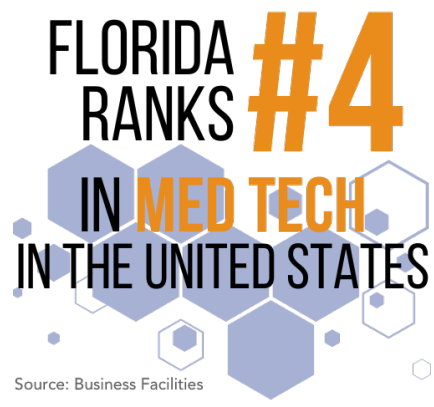
PASCO COUNTY TARGET INDUSTRIES

Advanced Manufacturing | Aerospace, Aviation & Defense | Business and Professional Services
High Technology | Life Sciences and Medical Technology | Logistics and Distribution



FLORIDA RANKS **#9**
IN **LIFE SCIENCES**
IN THE UNITED STATES

Source: Business Facilities



FLORIDA RANKS **#4**
IN **MED TECH**
IN THE UNITED STATES

Source: Business Facilities



FLORIDA RANKS **#5**
IN **AEROSPACE &
AVIATION**
IN THE UNITED STATES

Source: Business Facilities

AVERAGE WORKFORCE WAGES

- Advanced manufacturing
 - **Pasco: \$71,522**
 - Florida: \$85,739
 - US: \$99,351
- Life Sciences & Medical Technology
 - **Pasco: \$84,561**
 - Florida: \$106,919
 - US: \$138,168
- High Technology
 - **Pasco: \$83,286**
 - Florida: \$105,255
 - US: \$138,969
- Business & Professional Services
 - **Pasco: \$54,656**
 - Florida: \$75,241
 - US: \$90,097
- Logistics & Distribution
 - **Pasco: \$41,025**
 - Florida: \$55,578
 - US: \$59,571
- Aerospace, Aviation & Defense
 - **Pasco: \$76,941**
 - Florida: \$97,836
 - US: \$120,951



WORKFORCE

BY TARGET INDUSTRY



MSA: 1,971,154

Pasco: 328,932

TOTAL LABOR POOL

**FLORIDA
RANKED**

#1

**IN NATION FOR ATTRACTING
AND DEVELOPING A
SKILLED WORKFORCE!**

Average number of workers within 30-minute drive:

- Advanced manufacturing
 - **36,718**
- Life Sciences & Medical Technology
 - **16,025**
- High Technology
 - **80,744**
- Business & Professional Services
 - **267,849**
- Logistics & Distribution
 - **53,517**
- Aerospace, Aviation & Defense
 - **61,646**



Our award-winning workforceCONNECTpasco.com platform allows employers to find programs that produce talent that will thrive in their industries and explore resources that can help their business stand out to top candidates. It also allows job seekers the opportunity to discover and explore various career pathways in a diverse economy of fast-growing industries.

1

HIRING

Whether you are searching for entry-level or experienced talent Pasco County has a robust workforce to meet all your needs. Explore our directory of training partners to find the perfect fit to recruit fresh graduates or download our guides on best practices when searching for more experienced talent.

2

LABOR MARKET DATA

Pasco is one of the fastest-growing counties in the United States and sometimes it is hard to find current data that reflects our growth. From average wages to drive time analyses and much more, we can help you make informed decisions when looking to grow your workforce.

3

INTERNSHIPS

Looking to create a learning opportunity for local students, or set up an apprenticeship program for your specialized manufacturing positions? We can help build your program from building your curriculum to writing your advertisement and connect you with a local partner to see your program through to success.

4

TRAINING GRANTS

Pasco County has a great selection of training providers that teach relevant and current workforce skills to your future employees. Best of all, your new and existing employees may be eligible for grants that will reimburse you for the cost of most training.

LIFESCIENCES & MEDICAL TECHNOLOGY

TOUCHPOINT MEDICAL



1/27/2025



SPEROS, FL



BAUDUCCO FOODS



- \$233 Million Capital Investment
- 600 New Jobs
- 84 Acres
- 900,000 Square Feet



**CATALYST
PROJECT**

ZEPHYRHILLS AIRPORT INDUSTRIAL PARK 335 TOTAL DIVISIBLE ACRES



ADVANCED MANUFACTURING

GARYLINE



GARYLINE[®]

Discover the Manufacturing Advantage



1/27/2025

METTLER TOLEDO



AEROSPACE, AVIATION & DEFENSE

TRU SIMULATION + TRAINING



1/27/2025

PALL AEROPOWER



BUSINESS & PROFESSIONAL SERVICES

PHILLIPS & JORDAN

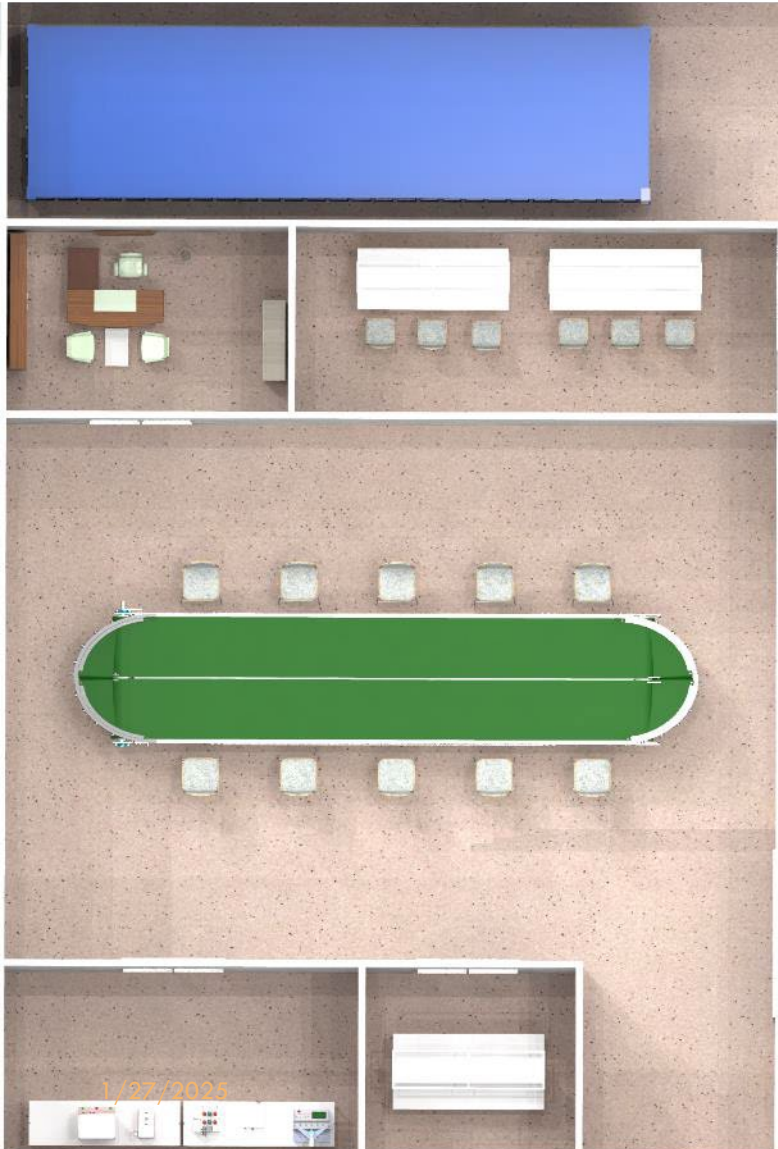


1/27/2025

WELBILT, INC.

HIGH TECHNOLOGY

FUSION5



GLOBAL ELECTRONIC TESTING SYSTEM

LOGISTICS & DISTRIBUTION

NORTH TAMPA BAY 75 BUSINESS CENTER



1/27/2025

NVGTN

SPECULATIVE BUILDINGS

Spring Hill
54 CROSSINGS



Masaryktown
ASTURIA



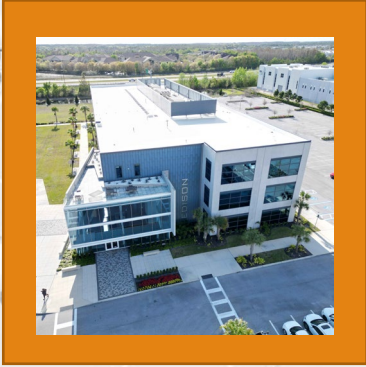
Trilby
NORTH TAMPA BAY 75 BUSINESS CENTER



SUNLAKE BUSINESS CENTER



THE EDISON



MOFFITT CANCER CENTER, SPEROS FL



PASCO READY SITES

The Ready Sites Program assesses, evaluates, and certifies large tracts of land to prepare properties for industrial development and create a portfolio of project-ready sites for targeted industries.

There are currently over 2,500 acres of land in the program. Each site features numerous digital tools for site selectors to utilize and tour the site.



READY SITES PROGRAM

**EAGLE I & II
INDUSTRIAL PARKS**



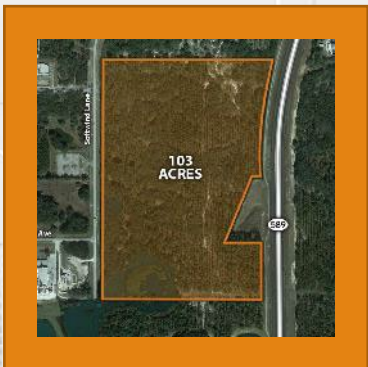
**ENTERPRISE SOUTH
SUPER PARK**



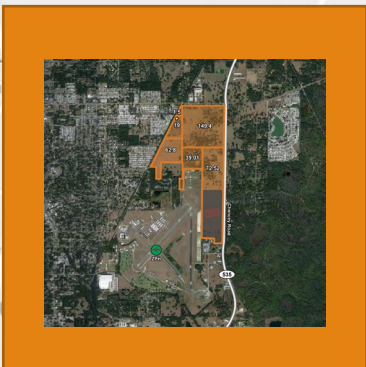
**HAYS ROAD
INDUSTRIAL PARK**



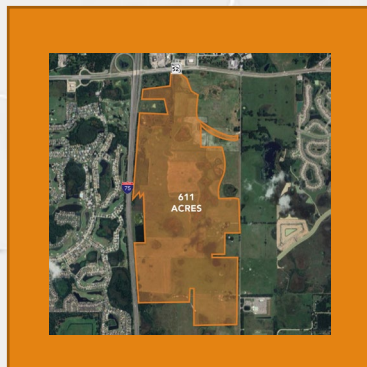
**SOFTWIND
INDUSTRIAL PARK**



**ZEPHYRHILLS AIRPORT
INDUSTRIAL PARK**

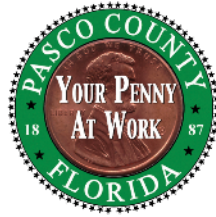


**DOUBLE BRANCH
SUPER PARK**



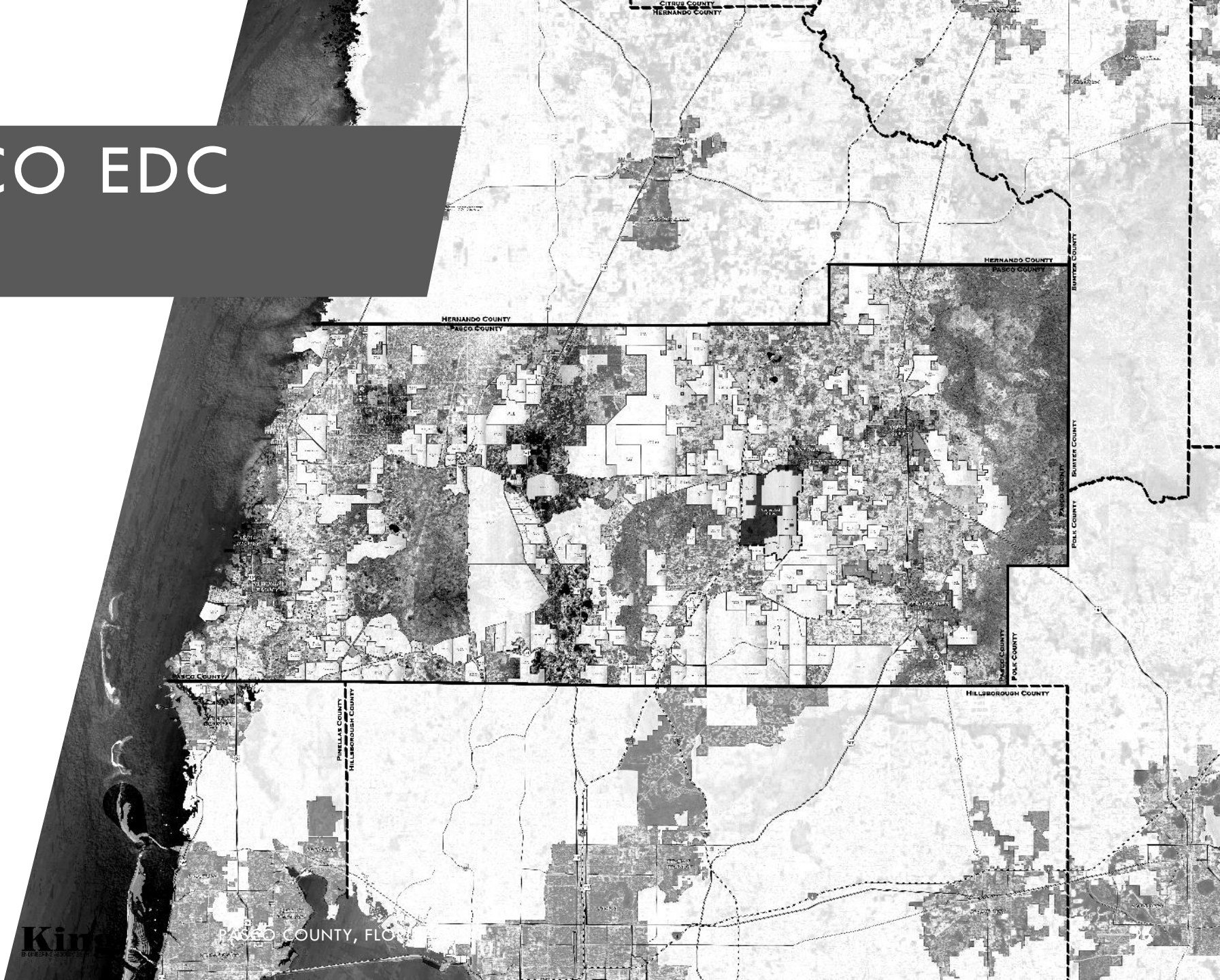
INCENTIVES

- **Penny for Pasco**
 - \$56 Million for Economic Development
- **Job Creation Incentive**
 - \$2,000-\$5,000 per Job
- **Other Benefits for Companies:**
 - Property Tax Refund
 - Training Grants
 - No Transportation Impact Fees for Office, Industrial and Hotels in the US19 and SR 54/56 Area
 - Lower Property and Communications Taxes
 - Expedited Permitting
- **State of Florida**
 - Sales & Use Tax Exemptions on Manufacturing Equipment
 - Tax Exemption for R&D Equipment
 - Clean Energy Incentives
 - High Impact Performance Incentive
 - Capital Investment Tax Credit



HOW PASCO EDC CAN HELP

- Real Estate Identification
- Workforce Assistance
- Incentive Identification
- Demographic Data
- Connecting with Stakeholders



MEET OUR BUSINESS DEVELOPMENT TEAM



BILL CRONIN
PRESIDENT/CEO



TURNER ARBOUR
SENIOR ECONOMIC
DEVELOPMENT MANAGER



TOM RYAN, CEcD
VICE PRESIDENT, BUSINESS
DEVELOPMENT



RYAN GESSMAN
ECONOMIC DEVELOPMENT
MANAGER



DAN MITCHELL, EDP
SMARTstart PROGRAM
DIRECTOR



SARAH ALWAY
ECONOMIC DEVELOPMENT
COORDINATOR





THANK YOU

Bill Cronin
President/CEO
Pasco EDC

bcronin@pascoedc.com
www.pascoedc.com

