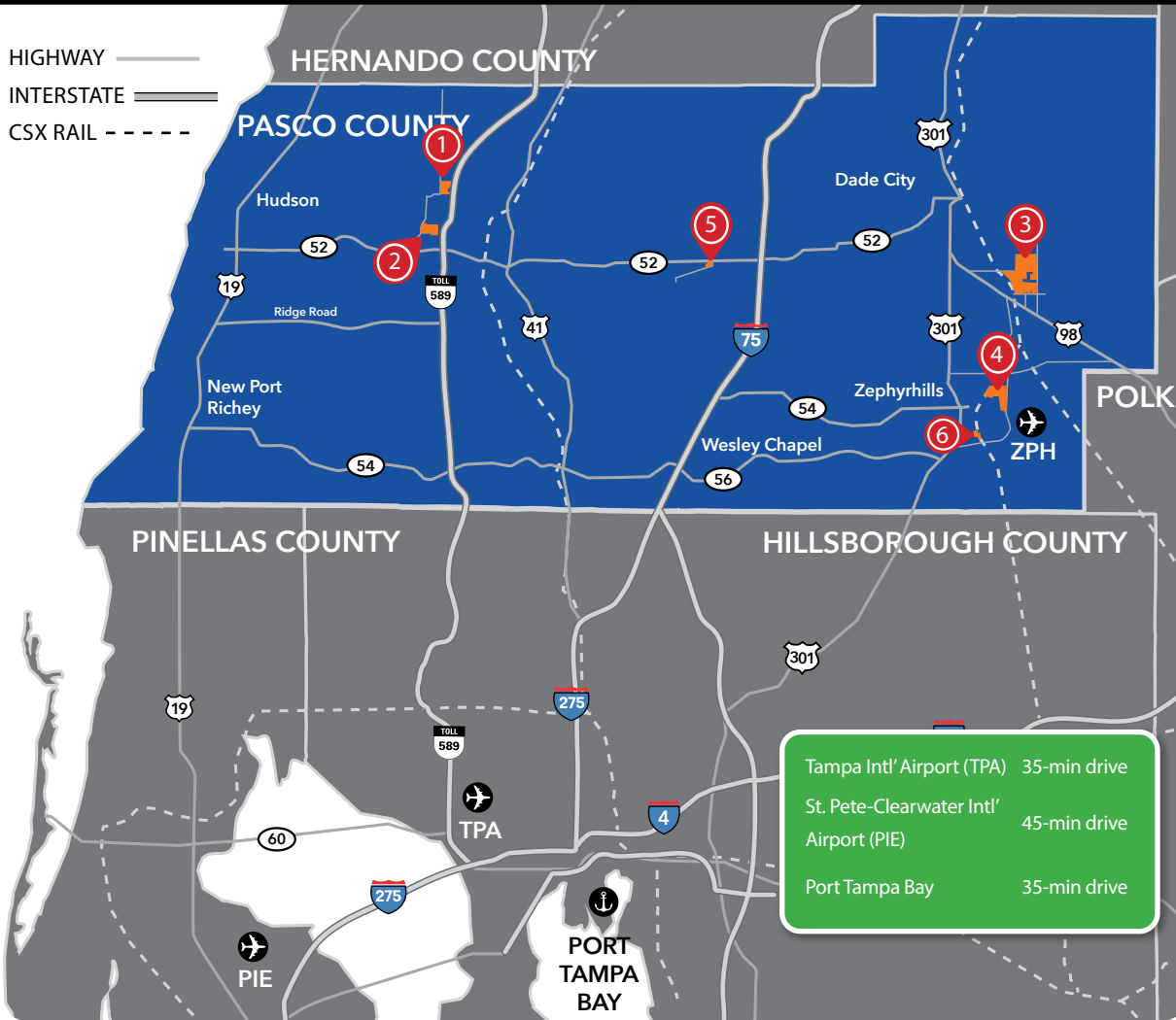




HIGHWAY ———
INTERSTATE ———
CSX RAIL - - - - -



Tampa Int'l Airport (TPA) 35-min drive
St. Pete-Clearwater Int'l Airport (PIE) 45-min drive
Port Tampa Bay 35-min drive

SITE 1
SOFTWIND INDUSTRIAL PARK

- 103 acres vacant and divisible
- Utilities adjacent to site: water, sewer, electric - gas and telecom available
- Quick access to FL52 and FL589



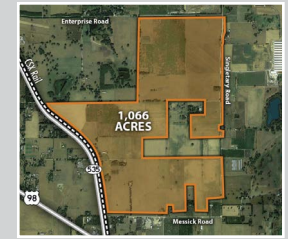
SITE 2
HAYS ROAD INDUSTRIAL PARK

- 199 acres vacant and divisible
- Utilities at site: water, sewer, electric - gas and telecom available
- Quick access to FL52 and FL589



SITE 3
ENTERPRISE SOUTH SUPER PARK

- 1066 acres – vacant and divisible
- Dual served electric
- Adjacent to CSX Rail, frontage on FL 35A and four local roads



SITE 4
ZEPHYRHILLS AIRPORT INDUSTRIAL PARK

- 347 acres – vacant and divisible
- Utilities at site: water, sewer, electric - gas and telecom available
- Adjacent to CSX Rail and ZPH Airport
- Quick access to US HWY 301, US HWY 98 and I-75

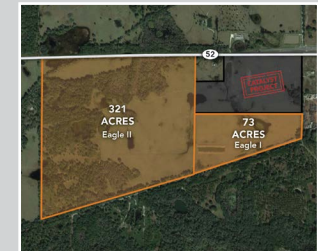


SOLD- 72 Acre future Bauducco Foods
404,000 SQF | 600 Jobs | \$233M CapX



SITE 5
EAGLE I & II INDUSTRIAL PARKS

- Utilities at sites: water, sewer, electric -telecom available
- Single owner
- Less than 2 miles to I-75



EAGLE I: 73 acres - Frontage on Bellamy Brothers Blvd.
EAGLE II: 321 acres - Frontage on FL52

SOLD- 68 Acre future Amazon Robotic Sortation Center
517,220 SQF | 500 Jobs | \$150M CapX



SITE 6
NORTH TAMPA BAY INDUSTRIAL PARK

- 111 acres – vacant and divisible
- All available utilities: electric, water, fiber optic, natural gas, and wastewater.

