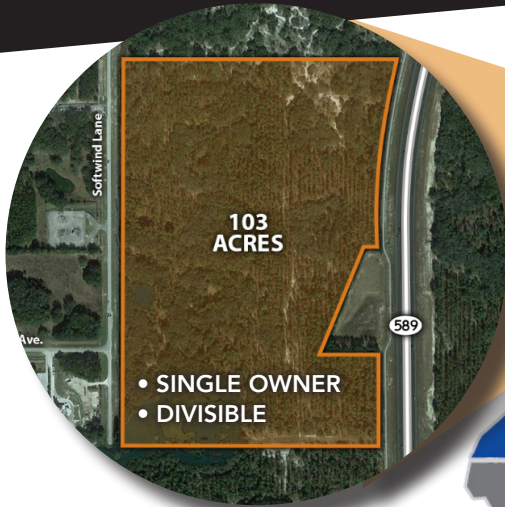


# PASCO READY SITES PROGRAM

## SOFTWIND INDUSTRIAL PARK



### TRANSPORTATION

- 4 MI TO FL589
- ↓ 3 MI TO FL52
- 18 MI TO I-75
- ↓ 39 MI TO PORT TAMPA BAY
- ↓ 33 MI TO TAMPA INTL. AIRPORT

### 45-MINUTE DRIVE TIME

POPULATION: 1,406,109  
LABOR FORCE: 663,850

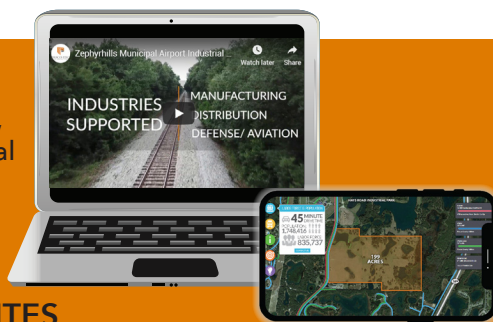
### IDEAL LAND USE

- MANUFACTURING & ASSEMBLY
- LOGISTICS & DISTRIBUTION
- DEFENSE CONTRACTING
- SUPPORTING OFFICE

### UTILITIES

- ELECTRIC:  
24.94/14.4Kv DISTRIBUTION LINES  
30 MW AVAILABLE CAPACITY  
NATURAL GAS 6" LINE  
WATER & WASTEWATER 12" LINES

**INTERACT WITH THE SITES**  
Explore each Ready Site's utilities, transportation networks, and aerial property views using interactive maps and videos.



**ASSESS | EVALUATE | CERTIFY**  
**CALL US TODAY 888-60-PASCO**

[PASCOEDC.COM/READY-SITES](http://PASCOEDC.COM/READY-SITES)

